



# Rural Health Mission Nigeria

# ANNUAL REPORT

# 2017

**Table of Contents**

**NOTES FROM THE CEO ..... 3**

**ABOUT RHEMN ..... 4**

**THE EXECUTIVE SUMMARY ..... 5**

**STRATEGIC ROAD MAP ..... 7**

**EXPECTED OUTCOME ..... 8**

**HIGHLIGHTS OF PROJECTS AND PROGRAMS ..... 9**

**THE ACTIVITIES COVERAGE .....10**

**THE SUMMARY OF ACTIVITIES .....12**

**FIELD PHOTOS .....13**

**NOTES FROM THE C.E.O**

Dear friends,

RHEMN was founded on the basis of passion for the common man and the zeal to impact positively on their lives. The year 2017 has been so exciting and full of remarkable milestone achievements. As the last lap of our three (3) year strategic plan, in 2017, we launched the “Raise a Healthy Child Campaign” in many communities and schools across Gombe, Adamawa, Taraba, Bauchi, Yobe and Borno states with outstanding successes. Over the 12 months, we were able to reach out to over 50,000 children with supplement and other services and over a thousand women received prenatal supplement. We trained about 250 of our community volunteers on service delivery competency. Thanks to the Vitamin Angels for supplying us with the supplements and deworming tablets and also training our volunteers.

RHEMN was legally registered on 17<sup>th</sup> March 2017 at the Corporate Affairs Commission Abuja and I consider this to be one of our greatest achievements in the year under review. Our membership database was authenticated and we can now boast of over 200 authentic registered members/volunteers.

New executives were inaugurated and as expected their performance are overwhelming that is why the organization have made milestone achievement.

Our strategic plan was reviewed and four priority areas were identified and five year road map was drawn to be launched in 2018. The strategic plan focuses on; ensuring access to Maternal, Child and Reproductive health services, Advocating for improved public health policy, Disease Surveillance & Community Education and strengthening response & Intervention capacity of PHC facilities. This plan was designed based on consultations, field experience and available evidence.

My fellow patriots, it is not about how much you have saved in your bank accounts, think about what you will be remembered for when you are no more.

Best Regards.

Muhammad Ahmad Saddiq

Founder/CEO of RHEMN

## **ABOUT RHEMN**

The Rural Health Mission Nigeria (RHEMN) is a Non-profit Organization focusing on providing access to basic healthcare services for women and children in rural and under-served communities. RHEMN was founded on 1<sup>st</sup> January, 2014 for the purpose of providing sustainable access to essential healthcare services in hard-to-reach and underserved communities. The organization commenced skeletal operation in June 2015 where it carried out her first free medical outreach in Gembu community in Sardauna LGA (Mambilla Plateau), Taraba State. RHEMN was legally registered on 17<sup>th</sup> – 03- 2017. The interventions of the organization include but not limited to: Maternal and child care services, emergency health services, humanitarian services, health advocacy/awareness campaigns, sustainable school health services and other social services.

## **OUR MISSION STATEMENT**

Our mission is to provide basic healthcare services to those living in rural or hard-to-reach communities including underserved areas and also deliver immediate humanitarian services during and after crisis or community conflicts.

## **OUR VISION**

Our vision is to see every community in Nigeria with uninterrupted access to basic healthcare services and enjoy essential social needs and RHEMN leading the way to universal health coverage.

## **AIMS AND OBJECTIVES**

1. To provide access to basic healthcare service in rural, hard-to-reach and underserved communities to facilitate maximum healthcare coverage to eliminate disparities in healthcare, as well as healthcare access and quality and protect vulnerable individuals and communities from poor healthcare.
2. To provide sustainable school health services in Nursery and primary schools to promote the safety, well-being, and healthy development of children and support young people's successful transition to adulthood;
3. Ensure cost effective community-based affordable and easy access to sterile supplies especially during and after child birth and regular access to antenatal drugs and essential supplement for pregnant women and children

4. Promote economic and social well-being for individuals, families, and communities, including those with disabilities
5. To train up required number of volunteers on Family Health Care, Traditional Birth attendants and health education programs etc.
6. To co-operate and partner with the government Organizations and agencies seeking the goal of redressing mortality rate and improving health status of common people or relief and rehabilitation at the time of any disaster or conflicts.
7. To plan and execute Development, Relief and Rehabilitation programs within the terms of objects of the RHEMN.
8. Provide comprehensive response to healthcare threads in rural areas whether natural or man-made
9. Support wellness efforts across the life span, from protecting mental healthcare, to preventing risky behaviors such as tobacco use and substance abuse, to promote better nutrition and physical activity
10. To seek and receive subscriptions, donations and other supports from persons, institutions or Organizations both from home and abroad and use the same for the purposes of the Organization.

## THE EXECUTIVE SUMMARY

This report highlights our activities in the communities covering from January, 2017 to December, 2017. Our activities were anchored on two strategic goals as a road map which includes; a) goal 1 focuses on strengthening rural healthcare and improves access to basic healthcare services in hard-to-reach areas and b) goal 2 focuses on providing access to essential social needs in underserved communities across Nigeria.

Working on the above road map, we launched “Raise a healthy child campaign” which was designed to implement essential child care interventions such as immunizations, nutritional supplement, addressing the effects of malaria etc. The project was launched in 6 states of the Northeast Nigeria (Adamawa, Borno, Bauchi, Gombe and Taraba) covering over 30 communities reaching out to over 50,000 beneficiaries including pregnant women and under-five children.

We also carried out emergency humanitarian intervention in Mambilla Plateau Taraba State in June, 2017, during and after the communal clash which consumed over 50 lives, properties worth millions of Naira and living about 8000 people including women and children displaced without food, shelter, safe water and other basic needs. Our team in collaboration with Mambilla Legacy group intervened where we distributed food stuff, sanitary items, soap etc across affected communities. A two-day medical outreach was also conducted and over 2000 victims were treated of malaria, hypertension, depression, minor injuries etc.

We trained about 300 of our volunteers in service delivery competency.

RHEMN also collaborated with Gombe LGA PHC department to celebrate 2017 maternal and child health week where about 15,000 children were dewormed and supplemented with vitamin A, 1000 pregnant women received antenatal supplements for 3 months each.

Finally, The 2018 strategic road map was designed in December, 2017 which focuses on 4 priority areas including; ensuring access to Maternal, Child and Reproductive health services, Advocating for improved public health policy, Disease Surveillance & Community Education and strengthening response & Intervention capacity of PHC facilities.

## **THE STRATEGIC GOALS (ROAD MAP)**

### **Strategic Goal 1**

Our goal 1 focus is to strengthen rural healthcare and improve access to basic healthcare services in hard-to-reach areas.

### **Strategic Goal 2**

Our goal 2 focuses on providing access to essential social needs in underserved communities across Nigeria.

## **THE REVIEWED STRATEGIC ROAD MAP**

### **Strategic objective one**

To ensure access to and delivery of quality lifesaving obstetric and child healthcare services through restoration and expansion of health care services, with particular focus on the most vulnerable group.

### **Strategic objective two**

To strengthen health services and intervention capacity at the local facilities in the target area to ensure availability of essential drugs and medical supplies in all the target communities

### **Strategic objective three**

To strengthen early warning diseases surveillance, information management and epidemic response among the vulnerable groups through existing surveillance system

### **Strategic objective four**

To improve and expand the overall health coordination mechanism at the local levels for better coordination of health intervention activities in target communities

## THE EXPECTED OUTCOME

### Objective 1

- Increase access to basic health services by pregnant women and vulnerable children
- Number of home birth attendants trained
- Percentage of facility births and
- Number of ANC providers deployed
- Number of functioning health facilities in the target communities
- Number of children vaccinated
- Number of facilities providing comprehensive obstetric services and routine immunization services

### Objective 3

- Availability of surveillance tools and disease specific guidelines
- 90% of all outbreak alerts investigated within 48 hours
- Functioning early warning surveillance sites
- Cases Fatality Rate as indicator of effective epidemic management at the facility
- Attack Rate as an indicator of effective epidemic control
- Number of weekly surveillance bulletins produced and disseminated
- Surveillance officers in place in high risk areas within the target communities
- Reduced turnaround time for specimen analysis

### Objective 2

- Emergency structure in places
- Medical supplies and essential drugs
- Adequate transportation means available in field offices
- Ware housing space expanded and available for use

### Objective 4

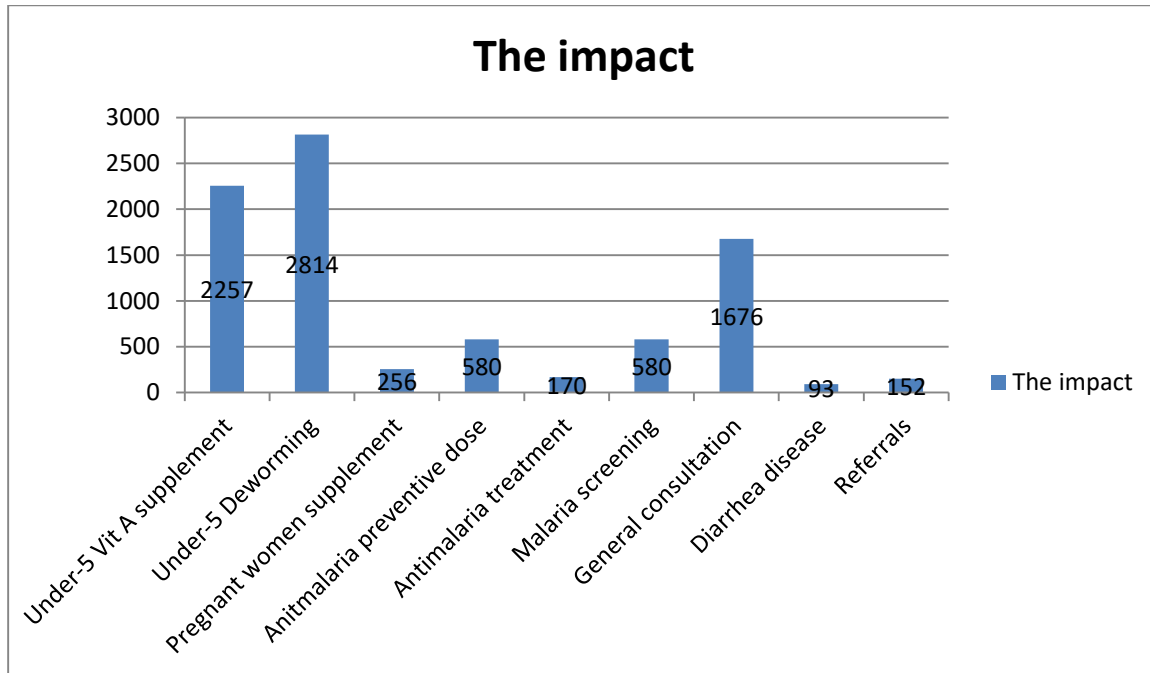
- Weekly health bulletin and surveillance produced and disseminated
- Data manager in place to support the response activities
- Epidemiologist deployed to support response in target communities
- Finding from the regular assessment summarized and shared with field offices
- All health events and outbreaks verified within 48hours
- Sufficient number of trained village health workers on emergency response procedures across the rural communities



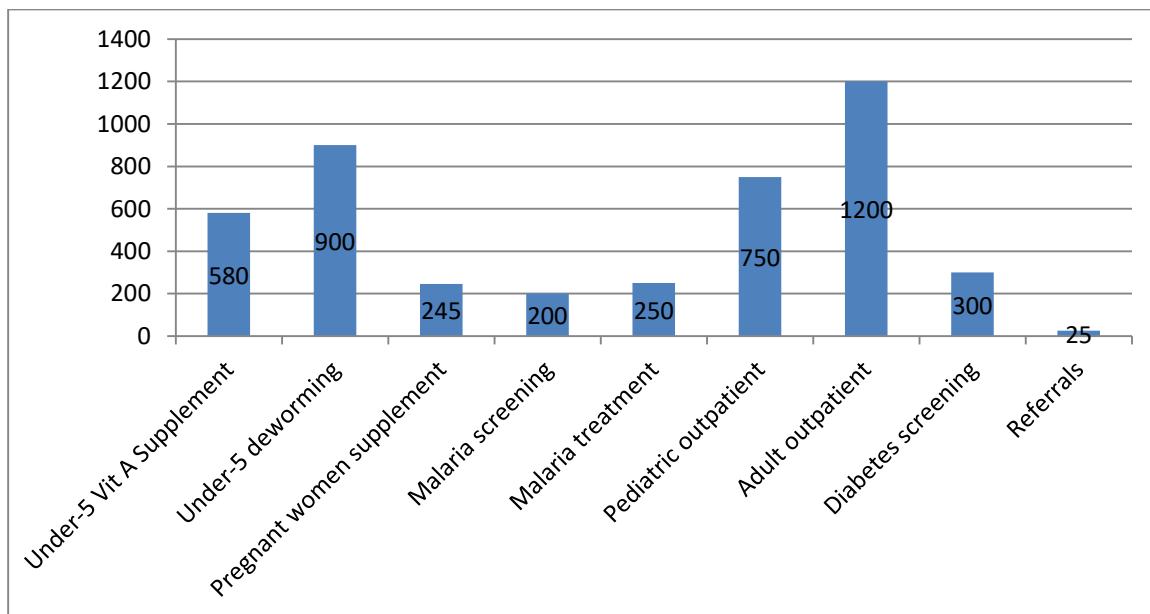
**HIGHLIGHTS OF OUR PROJECTS AND PROGRAMS**

**Raise a Healthy Child Campaign**

**KABRI OUTREACH**



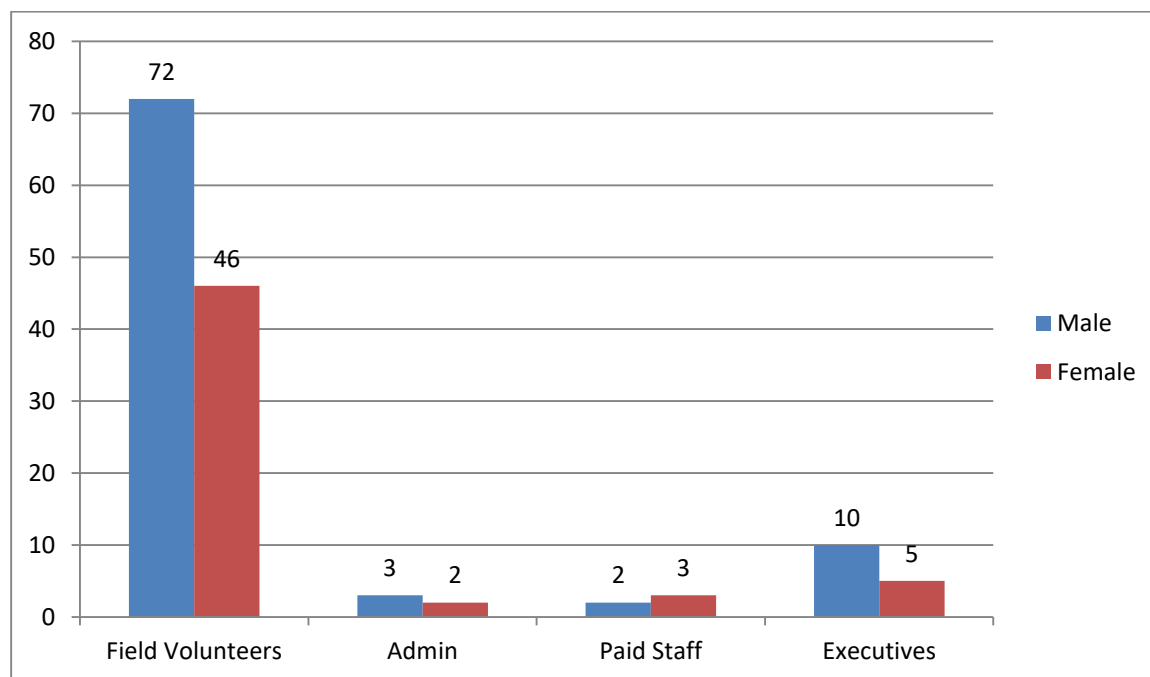
**BOJUDE OUTREACH**



## Mambilla Emergency intervention

Summary of Intervention			
Intervention	Items	Quantity	Beneficiaries
Relief materials	Rice	35 bags	IDPs
Relief materials	Noodles	14 cartons	IDPs
Relief materials	Palm oil	75 liters	IDPs
Relief materials	Detergent & soap	24 cartons	IDPs
Relief materials	Seasoning	14 cartons	IDPs
Relief materials	Pomade	24 cartons	IDPs
Medical outreach	Medical supplies		IDPs

## OUR PERSONNEL



## PERSONNEL TRAINING

State	Type of training	Category of staff	Total Trained
Gombe	VA/Deworming competency	Service providers	78
Taraba	VA/Deworming competency	Service providers	55
Adamawa	VA/Deworming competency	Service providers	45
Bauchi	VA/Deworming competency	Service providers	40
Yobe	VA/Deworming competency	Service providers	42

<b>GRAND TOTAL TRAINED</b>	<b>260</b>
----------------------------	------------

**THE COVERAGE**

<b>State</b>	<b>LGA</b>	<b>Ward</b>	<b>Community</b>
<b>Taraba</b>	Sardauna	Kabri	Kabri-Song
<b>Taraba</b>	Sardauna	Kabri	Chana
<b>Taraba</b>	Sadauna	Kabri	Kara
<b>Taraba</b>	Sardauna	Warwar	Warwar
<b>Taraba</b>	Jalingo	Nassarawo	Yagai
<b>Taraba</b>	Donga	Nyita	Nyita
<b>Taraba</b>	Donga	Kumbo	Kumbo
<b>Taraba</b>	Donga	Kante	Kante
<b>Taraba</b>	Karim-Lamido	Bambur	Bambur
<b>Adamawa</b>	Numan	Numan	Numan
<b>Adamawa</b>	Lamurde	Lafiya	Lafiya
<b>Adamawa</b>	Gombi	Faransa	Faransa
<b>Gombe</b>	Gombe	Shamaki	Kofan Shamaki
<b>Gombe</b>	Gombe	Nassarawo	Nassarawo
<b>Gombe</b>	Gombe	Bolari-East	Behind Stadium
<b>Gombe</b>	Gombe	Manawachi	Manawachi
<b>Gombe</b>	Gombe	Jauro Abbare	Jauro Abbare
<b>Gombe</b>	Gombe	Herwagana	Herwagana
<b>Gombe</b>	Gombe	Kagarawal	Kagarawal
<b>Yobe</b>	Potiskum	Sabon-line	Sabon-line
<b>Yobe</b>	Potiskum	Tudun-wada	Tudun-wada
<b>Yobe</b>	Potiskum	Anguwan Bolawa	Anguwan Bolawa
<b>Yobe</b>	Fika	Janga	Janga
<b>Yobe</b>	Fika	Koromchi	Koromchi
<b>Yobe</b>	Fika	Fika	Fika
<b>Yobe</b>	Fika	Gadaka	Gadaka
<b>Bauchi</b>	Katagun	Azare	Azare
<b>Borno</b>	Maiduguri	Muna Garage	IDP Camp
<b>Borno</b>	Maiduguri	Fariya	IDP Camp

## SUMMARY OF ACTIVITIES

Activity	Date	Community	Total beneficiaries
Free medical outreach	April, 2017	Bojude village	4450
Free medical outreach	January, 2017	Kabri ward	8576
Emergency Relief support	July, 2017	Mambilla Plateau	8385
Volunteer training	Sep. 2017	Gombe	78
Volunteer training	October, 2017	Adamawa	45
Volunteer training	October, 2017	Taraba	55
Volunteer training	November, 2017	Yobe	42
Volunteer training	November, 2017	Bauchi	40
School health services	September, 2017	Chcheniyya, Gombe	336
School health services	October, 2017	BCGA model school	86
Child health Week	Nov 2017	Gombe LGA PHC	7500

## SWOT ANALYSIS

### STRENGTHS

- Grass root resources
- Organization ideology
- Project implementation committee
- Project evaluation committee
- Internal and external audit
- Good relationship with local CBOs and LGA managers
- Strong team work spirit

### OPPORTUNITIES

- Local community support
- Local authorities support
- Mass support
- Local leaders support

### WEAKNESSES

- Language skills
- Poor logistical support
- Financial constraints

### THREATS

- Insecurity
- Poor perception of NGOs in Nigerian perspective
- Donors perception
- Transportation difficulties

**FIELD PHOTOS**



Handing over relief support at Emir's palace Gembu



Conveying relief materials



RHEMN volunteers with IDPs at LEME



Rhemn volunteer Crossing River at yana





Handing over relief support to camp managers at Nguroje



School children deworming at Modibbo Islamiyya Gombe



Bojude free medical outreach





Bojude free medical outreach



Volunteers trained in 2017







Patients at free medical outreach kabri



**Kabri free medical outreach**

